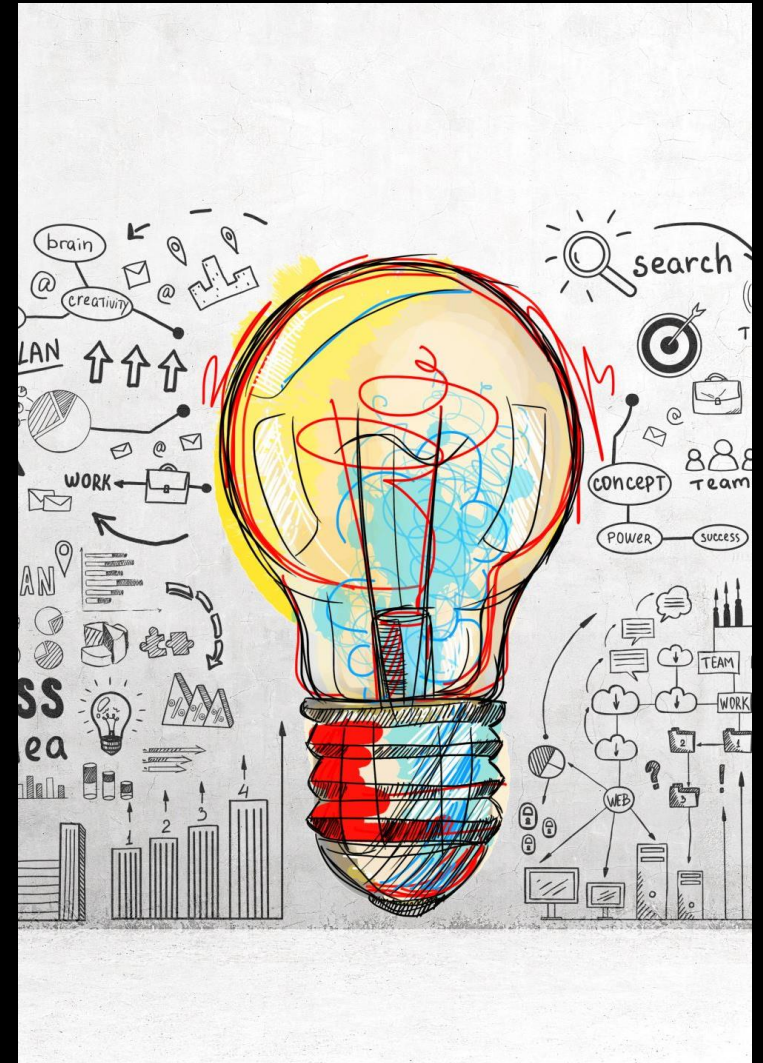


CHAPTER 06 - EXIF

EXIF (Exchangeable Image File Format) files store important data about photographs. Almost all digital cameras create these data files each time you snap a new picture. An EXIF file holds all the information about the image itself — such as the exposure level, where you took the photo, and any settings you used.



LIBRARY STORAGE

→ The EXIF file format makes storing and retrieving your photos as easy as possible. EXIF's store metadata - or data about your photos' image data - so that you can group them based on certain criteria, like GPS location, time and date, or even specific camera settings.



ADVANTAGES OF EXIF FILES

- Storing and retrieving information about your photos in your digital image library is easy with EXIFs.
- You can learn techniques and tricks from other photographers by checking out the settings data in the EXIF files of photos you like.
- They make it easy to recreate effects from photos you've taken in the past by giving you a record of the settings you used.



DISADVANTAGES OF EXIF FILES

- Other photographers may be able to gain access to your EXIF data, which could allow them to produce similar-style photos themselves.
- EXIFs store GPS location data, which might raise concerns if you're conscious of how your personal data is used.
- EXIF data stored within images takes up space on a website. This can slow the site's speed, negatively impacting the user experience.



FILTER		COLLECTIONS		EXPORT		METADATA		▼	
f/2.8		1/45		400 x 600					
		-1		123 KB		300 ppi			
		ISO 400		sRGB		RGB			
▼ File Properties									
Filename				suzy_exif_tutorial.jpg					
Document Type				JPEG file					
Application				Adobe Photoshop CS5.1 Wi...					
Date Created				02/02/2012, 10:53:27					
Date File Modified				Today, 15:16:53					
File Size				123 KB					
Dimensions				400 x 600					
Dimensions (in inches)				1.3" x 2.0"					
Resolution				300 ppi					
Bit Depth				8					
Color Mode				sRGB					
Color Profile				sRGB IEC61966-2.1					
▶ IPTC Core									
▼ Camera Data (Exif)									
Exposure Mode				Auto					
Focal Length				52.0 mm					
Lens				EF24-70mm f/2.8L USM					
Max Aperture Value				f/2.8					
Flash				Did not fire, compulsory mode					
Metering Mode				Centerweighted-Average					
Subject Distance				2.3 m					
Custom Rendered				Normal Process					
White Balance				Auto					
Scene Capture Type				Standard					
Make				Canon					
Model				Canon EOS 7D					
Serial Number				[REDACTED]					
▼ Camera Raw									
Raw Filename				IMG_4665.CR2					
White Balance				Custom					
Temperature				5000 °K					
Tint				+47					
Exposure				+1.35					
Recovery				0					
Fill Light				0					
Blacks				1					
Brightness				+50					
Contrast				+16					
Clarity				0					
Vibrance				0					

EXAMPLE OF AN EXIF FILE
